

WHAT IS AN ENVIRONMENTAL INCIDENT?

An environmental incident is an unexpected, unplanned occurrence, which resulted in, or has the potential to result in, property damage, environmental harm or nuisance.

Spills, leaks & bunding:

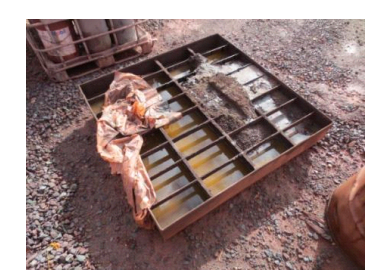
- REPORT spillage of oil, hydraulic fluid, fuel, acid, chemicals or other pollutants to:
 - ground >20L (sealed or unsealed surface)
 - drains, fresh or saltwater ponds or the sea - all discharges regardless of volume
 - bunding failures or issues



Oil leak to unsealed ground



Oil spills/ leaks onto compromised temporary bunding



Portable bund full of water & rubbish



Hydraulic oil leak from truck



Unbunded oil drums



Large oil spill from a temporary storage tank

Waste:

- REPORT inappropriate waste disposal such as:
 - incorrect disposal of waste in non-approved locations
 - contamination of waste bins (mixed waste)
 - unapproved transport of waste to and from the site



Contaminated cardboard bin



General rubbish bin waste not segregated



Piles of rubbish left for long periods

WHY IS IT IMPORTANT TO REPORT ALL ENVIRONMENTAL INCIDENTS?

- we have a duty to report pollution incidents under our PEPR requirements, Mining Lease conditions and the SA Environment Protection Act 1993.
- to ensure incidents are investigated & root causes identified.
- to ensure corrective actions are implemented and reviewed to prevent reoccurrence.

**Enter all environmental incidents into MyCority.
Enter actions to prevent reoccurrence**

Dust:

- REPORT dust emissions from:
 - material handling / mobile equipment working areas
 - process dust
 - stockpile fugitive dust
 - open area fugitive dust
 - roads / vehicle activity
 - material transfer points



Fugitive dust from vehicle



Material handling dust

Other:

- REPORT the following as incidents:
 - any vegetation clearance without environmental approval
 - resource wastage (water or energy) i.e. water leak, water wastage over 1000L, any ongoing power wastage event requiring action to rectify
 - impacts on flora and fauna
 - pollution control equipment – any equipment malfunction resulting in visible emission OR operating plant without pollution control equipment



Unauthorised vegetation clearance



Exterior lighting left on during the day



Impacts to fauna



Water leaks greater than 1000L